

UNCOVER WONDER



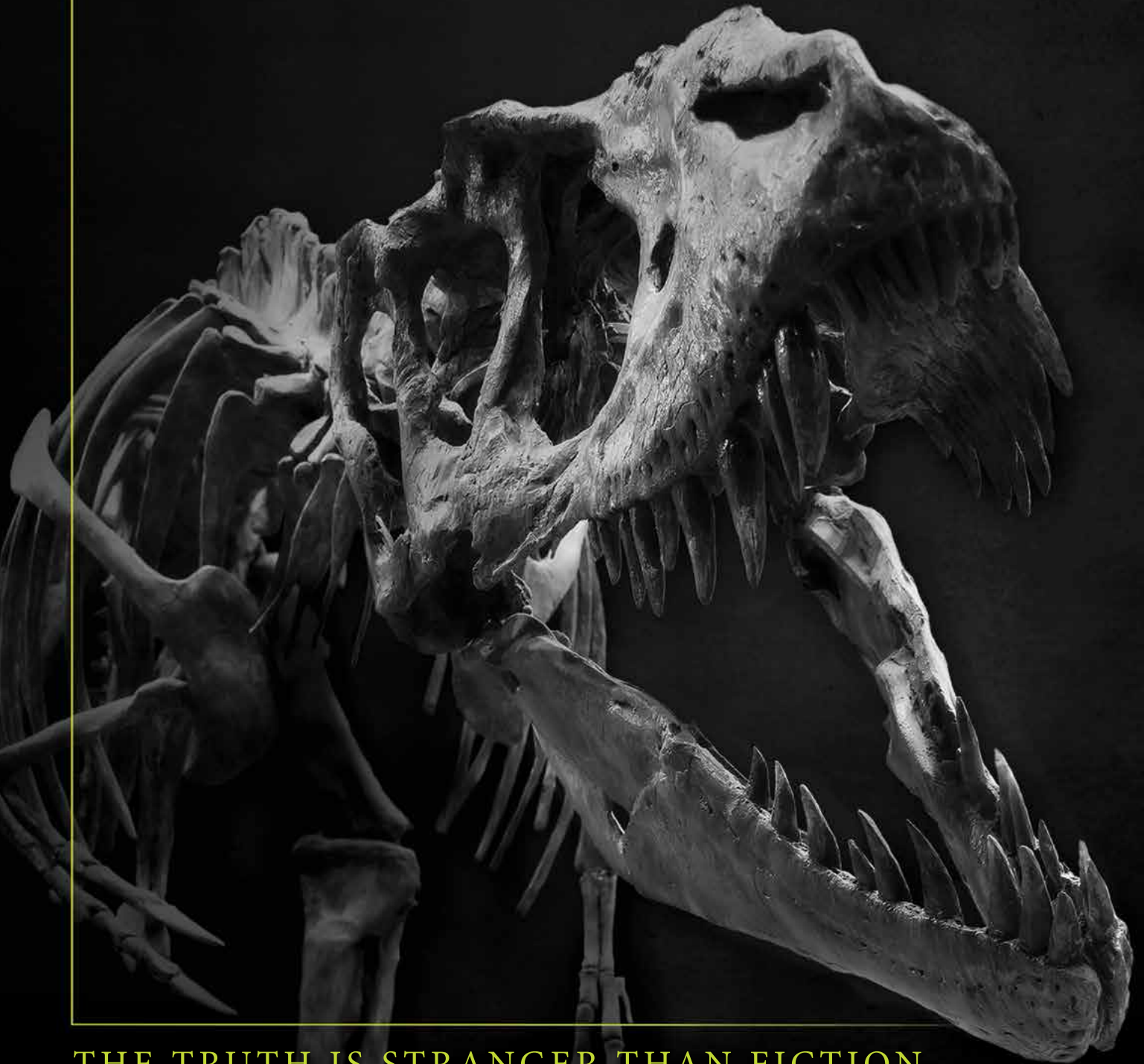
OUT THERE
ADVENTURES

Discover

BADLANDS, GOOD PEOPLE | DEVoured BY DINOSAURS | STRANGE STUFF | DRUMHELLER MAPS

Gorgosaurus

Experienced the world in more colour than you do



THE TRUTH IS STRANGER THAN FICTION

ROYAL TYRRELL MUSEUM

OPEN YEAR-ROUND • TYRRELLMUSEUM.COM

Alberta



hike here AMAZING VIEWS: Hiking a trail through the badlands near Drumheller.



ON THE COVER

Friends hike the unique landscape and geology of Horsethief Canyon on a sightseeing quest for fossils.

Photo by Ramon Nagesan

14 MAPS

Find your way around Drumheller and the surrounding area and plan a route rich with sights and attractions.

6 Badlands, Good People

Drumheller was first energized by coal, then by the scientific importance and tourism draw of its prehistoric fossils. But all along, people have been its true power.

10 Devoured by Dinosaurs

Drumheller is the place to fulfill, explore, expand—or discover—your fascination with dinosaurs, geology and natural history.

19 Out There Adventures

Getting out into, or above, the otherworldly landscape of the Drumheller valley will make vivid memories of this unique place.

28 Strange Stuff

The area's bizarre topography brings out the quirky, the alien and the just plain weird, from UFO sightings to animal oddities.



Published by RedPoint Media Group Inc., 100, 1900 11th St. S.E., Calgary, AB T2G 3G2, Ph 403-240-9055 redpointmedia.ca | **President & CEO** Pete Graves | **Associate Publisher** Pritha Kalar | **Client Relations Manager** Sandra Jenks | **Managing Editor** Miles Durrie | **Art Director** David Willicome | **Writer** Lisa Kadane | **Production Manager** Mike Matovich | **Audience Management & Reader Services Manager** Rob Kelly | Printed by Transcontinental LGM |



TRAVEL DRUMHELLER | Box 1357, Drumheller, AB T0J 0Y0, Ph 403-823-9552, traveldrumheller.com | Advertising inquiries, admin@traveldrumheller.com | Statements, opinions and viewpoints expressed within this publication do not necessarily represent the views of the publisher, Travel Drumheller in partnership with RedPoint Media & Marketing Solutions. | Copyright 2017 by RedPoint Media Group Inc. | No part of this publication may be reproduced without the express written consent of the publisher. **Printed in Canada for free distribution**

GREAT THEATRE IN THE BADLANDS!



Rosebud
Theatre

2017 SEASON

Under a Big Rosebud Sky

The Skin of Our Teeth	Mar 31 - June 3
The Spitfire Grill	June 16 - Sept 2
An Almost Holy Picture	June 29 - Sept 2
The Christians	Sept 22 - Oct 28
Cariboo Magi	Nov 10 - Dec 23



Over 200
actors on
Canada's
Largest Stage

Canadian **The** Badlands
Passion
Play

Experience the Greatest Story Ever Told!
Weekends July 7-23
Fridays & Saturdays at 6 pm
Sundays at 3 pm

© 2015 Rosebud Theatre, Badlands Passion Play 2015

THEATREINTHEBADLANDS.COM

Travel
Alberta
Canada

Welcome To Drumheller

Take time to enjoy one of Alberta's most unique communities!
Stunning pathways & breathtaking scenery will make you want to come back again & again.

- Heart of the Badlands
- Multiple Historic Heritage Sites
- Challenging 18-Hole Golf Course
- Charming Downtown
- And Dinosaurs!



Town of Drumheller | 224 Centre Street
403.823.6300 | dinosaurvalley.com



Your Home For Health & Wellness!



The Canalta Fitness Centre & Field House

Features 5,500 sq. feet of fitness space for you and your team!



Meeting Spaces & Banquet Halls

Seat up to 500 guests with 7293 square feet.

Experience Summer at the Badlands Community Facility

• Trail Walks • Canoe Trips • Park Spaces
Outdoor Tai Chi, Yoga & More!

Multi-Purpose Field House

3 sports courts complete with equipment.
Perfect for tournaments, birthday parties, events or team training.

80 Veterans Way, Drumheller | 403-823-1370
badlandscommunityfacility.com

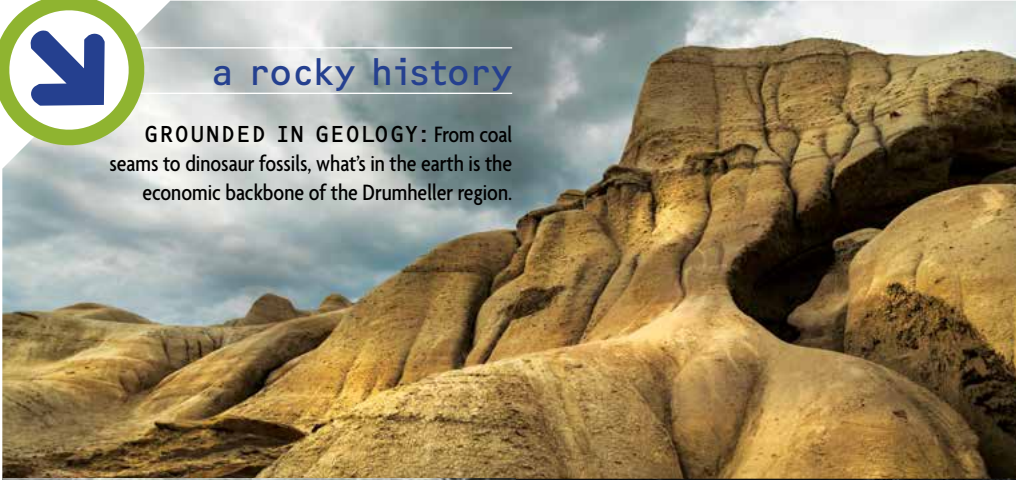


BADLANDS
COMMUNITY FACILITY



a rocky history

GROUNDING IN GEOLOGY: From coal seams to dinosaur fossils, what's in the earth is the economic backbone of the Drumheller region.



BADLANDS, GOOD PEOPLE

HOW RICH GEOLOGY AND SPECTACULAR GEOGRAPHY SHAPED THE HISTORY AND PEOPLE OF THE DRUMHELLER AREA

As your drive through east-central Alberta brings you closer to the Drumheller valley, flat prairie falls away and a stark, dramatic landscape of ochre, terracotta and maroon sedimentary rock takes over.

This surreal geography, with its capped rock formations called hoodoos, erosion-carved valleys known as coulees, and dead-end box canyons, is collectively referred to as “the badlands,” so named by French-Canadian trappers who came across a similar landscape in South Dakota and called the topography “*les mauvaises terres à traverser*”—“bad lands to cross.”

But within the rugged dunes and buttes of Alberta’s badlands lies treasure. The same forces of water and wind that shaped the topography also exposed the coal seams that turned the region into Western Canada’s energy centre in the 1900s, and the fossilized remains of dinosaurs that carried the town forward as a tourist destination after the last coal mine closed in 1979.

Indeed, the valley’s geological treasures have shaped Drumheller’s fortunes—and written the history of its people.

The area’s modern story began in 1884, when Joseph B. Tyrrell was mapping mineral deposits in

the Red Deer River Valley for the Canadian government. He found a partial dinosaur skull buried in the ground that would later be named *Albertosaurus sarcophagus*, a kind of tyrannosaur common in the province in the Late Cretaceous Period. Tyrrell went on to discover the region’s coal resource, which ignited a mining rush that began in earnest in 1911. Through much of the 20th century the region was dotted with up to 139 coal mines, a thriving industry that lasted nearly 70 years.

Unlike the first wave of settlers in the Canadian west, the people who came to work the mines weren’t homesteaders or pioneers. They were



worth a look

5 Historical Hot Spots

DIVE INTO DRUMHELLER'S HISTORY AT THESE ATTRACTIONS

coming to take on established jobs and build the valley's communities.

Coal began a slow decline after 1947, when the Leduc #1 oil discovery southwest of Edmonton captured national attention. Around that same time, Drumheller's population peaked at 20,000.

In the decades to come, a good portion of local residents dug in their heels, stuck it out and looked for a new way forward. The answer came in 1985, when the Royal Tyrrell Museum of Pale-

ontology opened in Drumheller, becoming the cornerstone of the region's tourism sector. The town's population is now just over 8,000.

"Most visitors come to the valley because of the museum. Then they realize there's a lot more to do," says local resident Jay Russell,

"Most visitors come to the valley because of the museum. Then they realize there's a lot more to do"

—Jay Russell

adding that Drumhellerites themselves are another reason people return year after year. "Everywhere you go, you meet people. It's a very friendly town."

He says the region's history and landscape have bestowed a certain resiliency upon its residents.

"This is the badlands, but it's good land, with good people. The people here are tenacious. They have been through major floods and mining disasters, and the elation and depression that goes with a boom-and-bust economy," says Russell, who is also the curator and interim executive director at the Atlas Coal Mine National Historic Site in nearby East Coulee.

Atlas was one of the dozens of coal mines that provided an honest—if dangerous—day's work for thousands of men and boys during the Great Coal Rush of the 1910s to 1940s. Today, the Atlas mine is a tourist attraction that digs deep into Canada's coal-mining history. Adults enjoy the mine's Unmentionable Tour, where they're regaled with tales of the town's colourful past, including stories about gambling and the valley's many brothels.

"Drumheller is an interesting place. Part of what's shaped the valley is its history as a coal-mining town—it becomes ingrained in the personality of the people and place," says Mike Todor, a long-time resident and landscape photographer who owns 3rd Avenue Arts.

With its rich history, otherworldly landscape and locals who love their town, Drumheller endears itself to visitors from near and far. ≡

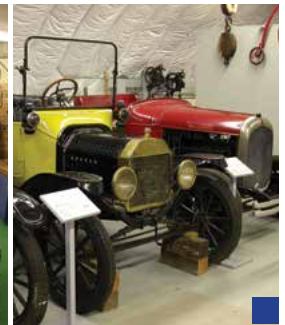
1 ATLAS COAL MINE NATIONAL HISTORIC SITE:

The year 2017 marks 100 years of the Atlas Coal Mine, and a summer of celebration is in store. Now a National Historic Site, the Atlas mine is the last of 139 coal mines in Drumheller and the most complete historic mine in Canada. It's home to Canada's last wooden tippie (a coal-loading facility). Climb the tippie, ride the train, explore underground and hear tales of mines and men. Open daily May to Thanksgiving. • 110 Century Dr. W., East Coulee, atlascoalmine.ab.ca



2 BADLANDS HISTORICAL CENTRE:

Learn more about Drumheller's coal-mining heritage, fossil-hunting fame and local oddities such as a hand-built, one-wheeled car at this volunteer-run facility. Open in the summer months. • 335 1st St. E., Drumheller



3 EAST COULEE SCHOOL MUSEUM:

See what life was like in a coal-mining town and learn about the pioneers who settled the area at this Municipal Heritage Site, located inside East Coulee's old schoolhouse. Open May through September. • 359 2nd Ave., East Coulee, ecmuseum.ca



4 HOMESTEAD MUSEUM:

The gadgets and outfits of today look downright futuristic when compared with the housewares, furniture, work implements and clothing from the pioneer area that are on display. Open May through mid-October. • 901 N. Dinosaur Tr., Drumheller

5 ROSEBUD CENTENNIAL MUSEUM:

Peruse artifacts collected from local farms and homes, and learn the stories of the pioneers and ranchers who settled the area. Open prior to each show at the Rosebud Theatre. • Main St., Rosebud



**We'll make sure you
sleep like a baby.**

*After a long day exploring
Drumheller, feeling comfortable
is key to an enjoyable stay.*

That is what we focus on at the Super 8 Drumheller. Independently owned, we are not your average Super 8. Enjoy our heated indoor pool, or snack on some buttery popcorn before getting some rest and relaxation, or enjoy any of the below offerings:

Complimentary Breakfast | Free High Speed Wi-Fi | Waterslide | Hot Tub | Heated Indoor Pool | Air Conditioned | Wheelchair Accessible Rooms | In Room Fridges | Elevators | Guest Laundry | Free Parking | Fitness Centre | Business Centre | Pet Friendly* **Small fee of \$15/pet required.*

Call 1.888.823.8882 to book today.



**Travel with your
best friend.**

Bring your little bud with you to Drumheller and take in the sights and experiences that make our town great. Join us for an amazing sleep, and all of the amenities you want with the comforts of home.

Canalta Jurassic Drumheller - Pet Friendly* | Complimentary Breakfast | Free High Speed Wi-Fi | Hot Tub | Steam room | Conference center | Air Conditioned | Wheelchair Accessible Rooms | In Room Fridges | Elevators | Guest Laundry | Free Parking | **Small fee of \$15/pet required.*

Call 1-888-823-3466 or visit CanaltaHotels.com to make your reservation. Looking forward to having you stay with us.





Slide into relaxation

Enjoy the scenery that Drumheller has to offer and at the end of the day take comfort in knowing that your accommodation will be just as rewarding. Enjoy our heated pool, hot tub and water slide or simply enjoy the roar of a fireplace. **Ramada Drumheller** has options for all travelers. Standard rooms to Jacuzzi suites. We want your stay to be memorable for all of the right reasons. **Call 1.877.807.2800 to book today!**



Make your event a Jurassic Success!



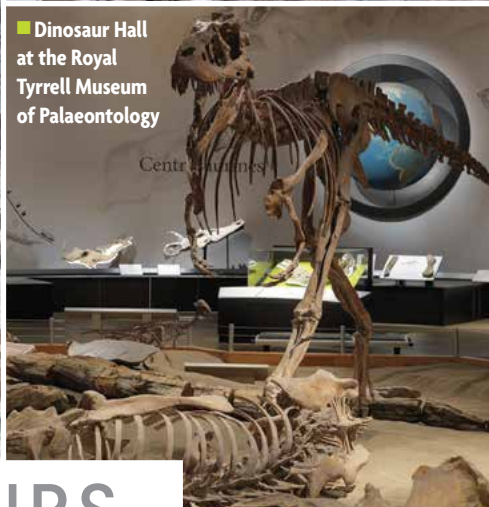
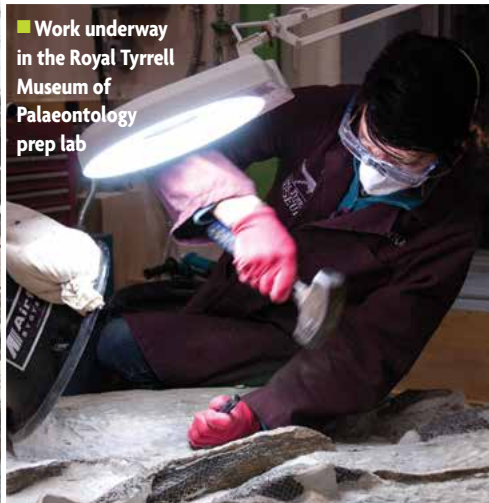
Planning a business conference or family gathering? Our Cretaceous Conference Centre will cover all of your needs with a 2,548 square foot room that accommodates up to 170 guests, AV equipment and we will assist you in all of your event details. Conveniently located next to the Canalta Jurassic Hotel in Drumheller, it's literally just an elevator ride up to your bed.

Call 1.888.823.3466 or visit CanaltaHotels.com for more information.



maybe you will find one of these

GREAT FIND: Avery Ford, 11, checks out a fossil just off the interpretive trail near the Royal Tyrrell Museum



DEVOURED BY DINOSAURS

IN AND AROUND DRUMHELLER, PREHISTORIC BEASTS RULE | by Lisa Kadane

Clearly, my kids don't measure up to a *Camarasaurus*. They're standing next to an almost 3.5-metre-tall right hind leg bone from one of the prehistoric herbivores—the most common sauropod found in North America. Even if I stacked them one atop the other, they'd still fall short.

This popular photo-op exhibit is situated at the entrance to the Dinosaur Hall at the Royal Tyrrell

Museum of Palaeontology in Drumheller. It's a fun introduction to the gallery's display of 40-plus fully mounted skeletons, from docile *Triceratops* to armoured *Stegosaurus*.

The museum, an active research facility, boasts 13 permanent exhibits. Together, they weave a vivid tale of the province's geological and palaeontological history. Visitors learn about the planet's formation, the evolution of the diverse range of

vertebrates we call dinosaurs and their eventual fall from dominance as the climate changed and mammals began their ascendance.

But the Dinosaur Hall, in our opinion, is the climax of a trip to this world-renowned facility.

A visit to Drumheller is proof that while dinosaurs may be ancient, they never grow old. The entire town brings the beasts to life in a way that engages people of all ages.





search here too



Avery Ford and Blake Ford explore the unique terrain of Midland Provincial Park near the Royal Tyrrell Museum of Palaeontology

"Dinosaurs capture people's imaginations. Adults are fascinated and have lots of questions—they enjoy it just as much as their children do," says Earle Wiebe, the Royal Tyrrell's head of education.

In fact, B.C. (before children), my husband and I loved touring through Drumheller to spot the many dinosaur statues on street corners and park benches. The local Chamber of Commerce has placed 33 dinos around town, and private businesses display numerous others.

We even climbed the 106 steps to the top of the World's Largest Dinosaur, a *T. rex* replica, for a kitschy selfie and a terrific view of the badlands through serrated teeth. And on more than one occasion we've discovered dinosaur fossils while hiking through the badlands in Horseshoe Canyon or along the Hoodoos Trail near East Coulee.

Brent Noland, owner of Drumheller Rocks Geotourism, leads aspiring geologists and paleontologists like us into this landscape year-round to learn more about the region's dinosaurs and other prehistoric life, along with the glacial history that's recorded in the rocks.

Drumheller comes by its title of Dinosaur Capi-

"Dinosaurs capture people's imaginations. Adults are fascinated and have lots of questions—they enjoy it just as much as their children do"

—Earl Wiebe

tal of the World honestly.

After taking in the bony beasts in the Royal Tyrrell's Dinosaur Hall, our family embarks on its own self-guided walk along the one-kilometre looped interpretive trail in Midland Provincial Park, adjacent to the museum. Hoping to get hands-on with some bona fide specimens, my husband, a geologist, leads us off-path into the maze of hoodoos and coulees where the forces of erosion reveal new fossils every year.

We follow a dry streambed and our trailblazing is soon rewarded. I spy a mound of yellowish-tan mottled material jutting from the ground that looks different from the surrounding rocks. Closer inspection reveals the telltale features of fossilized bone. It's big, too—larger than my daughter's hand.

After taking pictures and marking its location, we return to the museum to report this exciting fossil find. My kids may be small compared to a *Camarasaurus* leg, but they're big on enthusiasm when it comes to all things dinosaur. ☰



worth a look

Rock Shop Hop

THESE STONES TELL STORIES

Looking to add to your rock collection? Several shops in Drumheller sell fossils, minerals and gems for collectors.

trilobite fossils



ammonite



fossilized leaves



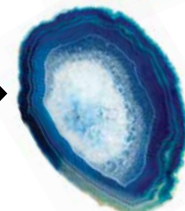
Megalodon tooth



amber



agate cross-section



The Fossil Shop boasts a large collection of identifiable dinosaur bone sections. The store also sells petrified wood, fossilized leaves, ammonites, trilobites and a variety of minerals.

61 Bridge St., Drumheller, thefossilshop.com

The World's Largest Dinosaur gift shop, located inside the Drumheller Visitor Information Centre, has fossilized bones and petrified wood for sale, as well as ammonites and jewelry made from ammolite, an opal-like gem. 60 1st Ave. W, Drumheller, worldslargestdinosaur.com

Open seasonally (April to mid-October), Fossil World the Jurassic Store sells everything from bugs trapped in amber to beautiful agate cross-sections, geodes and fossil teeth from *Megalodon*, a prehistoric shark. 105 1st St. W, Drumheller, fossil-world.com

Starland County



Morrin Historical Park-"Sod House".

Stop by the Village of Morrin and visit our unique Sod House. Originally built in 1980 to honour our forefathers the turn of the century furnishings will bring back many memories. Substantial upgrades in 2009 helped to sustain this historic legacy. Relive the past in this authentic replica of Morrin's rich history.

**Call 403-772-3870, 403-772-3909
or 403-823-9484 to arrange a tour.**

Morrin



Morrin Corner Buffalo Tours

Experience the real Wild West by touring an actual operating buffalo ranch! This is a great opportunity to get amazing photos of these majestic prairie animals. Please phone and make a reservation for your tour. 1/4 mile (0.4 km) east of the intersection of Hwy 9, 56 and 27 (Morrin Corner).

Tours require a reservation and run at 7pm.

**Contact us at 403-772-3843 or 403-820-0691
Email: mcbison@netago.ca**

Rowley



Rowley is an amazing ghost town with an undying spirit! It is also a must to visit when travelling through the Canadian Badlands. The community's main attractions include the newly restored elevators which have been designated as a provincial historic site, the Rowley Church, Prairie School Museum and the Yesteryear Artifacts Museum (housed in the original railway station).

The most famous stop in Rowley is Sam's Saloon, a well-known local watering hole and meeting place. Be sure to stop by on the last Saturday of the month for Pizza Night and great entertainment! Pizzas can be ordered between 5 pm to 8 pm. Free camping is available in designated areas and all donations are greatly appreciated!

Check us out on Facebook!

Rowley is 8 miles (12.8 km) north of the junction of Highway 56, 9 & 27 (Morrin Corner), then 3 miles (5 km) west on Township Road 32-4.

**For tours or event bookings, call 403-368-3757,
403-368-2355 or 403-368-3816.**





www.STARLANDCOUNTY.com



County Camping

McLaren Dam, Michichi Dam & Starland Recreation Area

These three campgrounds, operated by Starland County, each offer large, spacious campsites in beautiful serene settings. A great place to relax and do some fishing or hiking!

Campgrounds are open from May long-weekend to mid-October.

Note: Camping is on a 'first come, first serve' basis. The County does not take reservations.

Additional information can be found in the Campground section of this guide.

403-772-3793 | www.starlandcounty.com



Delia Museum & Grist Mill

This original 1913-14 two-room school contains a restored original classroom as well as local artifacts. Adjacent to the Museum is the only "New Ideal of Branford Gould, Shapley & Co." grist mill of this type in Western Canada. This wind powered mill pumped water, ground grain and ran a fanning mill or a lumber saw. It's a must see in Delia!

Open 10am to 4pm, Tuesday to Saturday, July 1 to Labour Day. Open holiday Mondays. Other times by appointment. Admission free. Donations always welcome!

307 Main Street, Delia. Call 403-364-3848.

Delia

Mother Mountain Tea House & Restaurant (Lic) & Country Craft Store



Beautifully restored and furnished with antiques located in a 1912 former lumberyard in the Village of Delia, the Tea House offers an excellent dining experience in a quaint and peaceful setting. Friday night we serve our famous baby back ribs. Saturday night we feature a Chef's Special. Sunday evening enjoy our Alberta Triple A Roast Beef. We also feature the largest selection of home-made pies and desserts in the region. Open 11 am to 8pm, Friday to Sunday.

Call 403-364-2057 for reservations.

www.mothermountainteahouse.ca

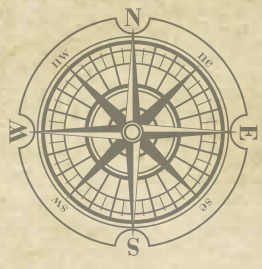




travel through time

FIND YOUR ADVENTURE: History and prehistory, the present and the sci-fi future, natural beauty and discovery await visitors to the Drumheller valley.

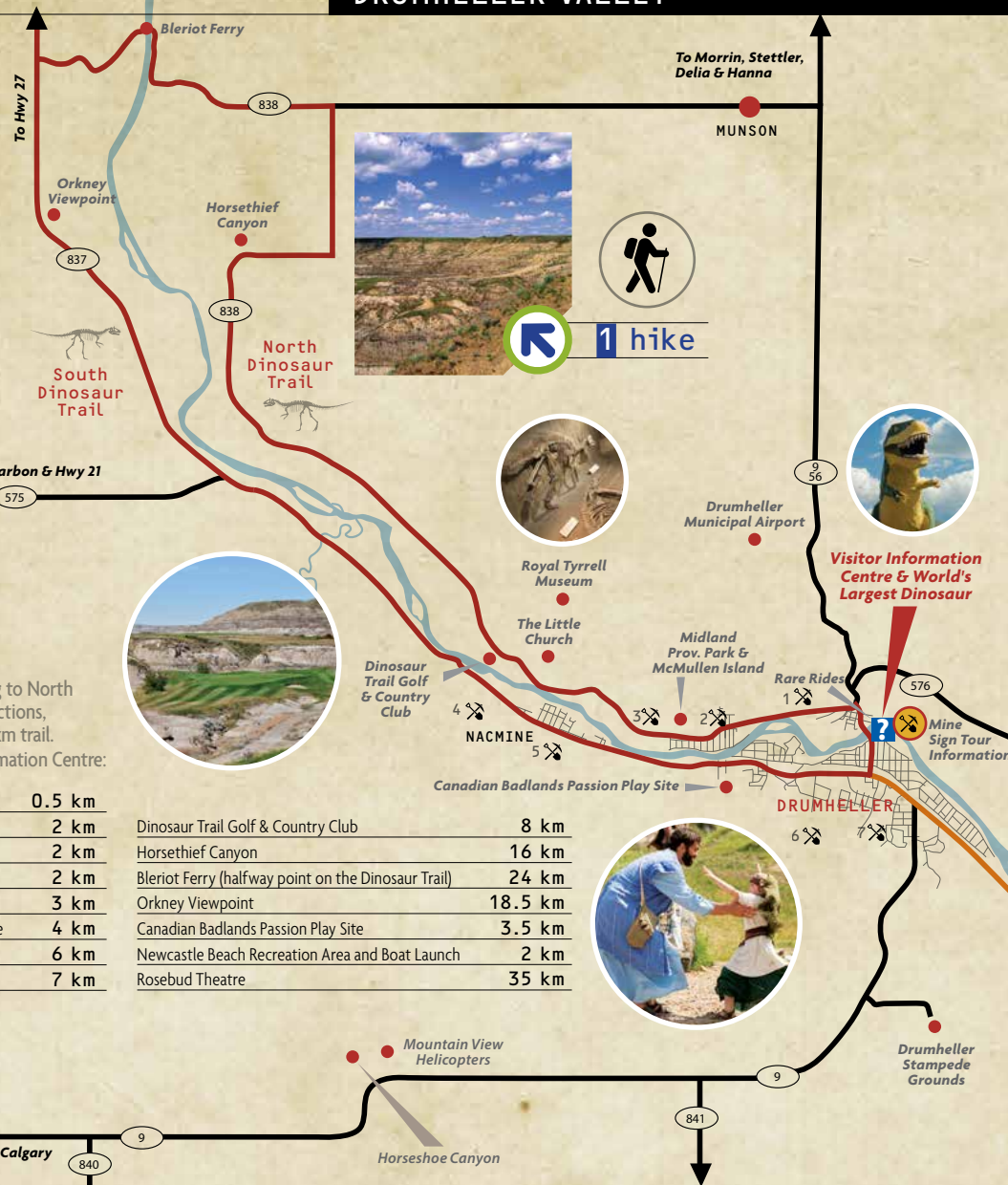
DRUMHELLER VALLEY



Dinosaur Trail

Begin the tour at the bridge, leading to North Dinosaur Trail. There are many attractions, services and facilities along the 48-km trail. Distances are from the Visitor Information Centre:

The Fossil Shop	0.5 km	Dinosaur Trail Golf & Country Club	8 km
The General Store	2 km	Horsethief Canyon	16 km
Homestead Museum	2 km	Bleriot Ferry (halfway point on the Dinosaur Trail)	24 km
Bumper Boat Amusements	2 km	Orkney Viewpoint	18.5 km
Fossil World Dinosaur Discovery Centre	3 km	Canadian Badlands Passion Play Site	3.5 km
Midland Provincial Park Interpretive Centre	4 km	Newcastle Beach Recreation Area and Boat Launch	2 km
Royal Tyrrell Museum	6 km	Rosebud Theatre	35 km
The Little Church	7 km		



1 hike

Attractions

- Atlas Coal Mine National Historic Site
- Hoodoo Tr, East Coulee
- Canadian Badlands Passion Play
- 605 17th St SW, Drumheller
- East Coulee School Museum
- 15 minutes east of Drumheller on Hwy 10
- Dinosaur Trail Golf & Country Club
- 6455 North Dinosaur Tr
- Royal Tyrrell Museum
- 1500 Dinosaur Tr North, (Hwy 838)
- Mountain View Helicopters
- Hwy 9
- Rare Rides
- 756 Hunter Dr., Drumheller
- Rosebud Theatre
- 116 Main St., Rosebud

Shopping

- Caracol Clay Studio
- 169 6th St, East Coulee
- Frontier Market
- 6.5 km east of Drumheller
- Top Rockers Motorcycle Gear
- 11 2 Ave N, Drumheller
- The Sage Shoppe
- Authentic Canadian Badlands gifts
- Beside Last Chance Saloon, Wayne

Restaurants

- Last Chance Saloon
- 555 Jewel St, Wayne
- Willow Tea Room
- at the East Coulee Museum

2 explore here



Campgrounds and Hotels

- Carbon East & Main Campgrounds
- South end of Carbon
- Dorothy B&B
- Cottonwood Campground, just south of Dorothy
- Rosedeer Hotel
- 555 Jewel St, Wayne
- McLaren Dam
- Hwy 851, 24 km north of Hwy 9
- Michichi Dam Recreation Area
- 12.5 km north of Hwy 576 on Hwy 849, Michichi, AB



3 drive there



The mines

- 1 Hy-Grade Coal Mining Company
- 2 The Brilliant Coal Company
- 3 Western Gem Coal Company
- 4 Red Deer Valley Coal Company Ltd.
- 5 Stirling/Commander Mine
- 6 Newcastle Coal Company
- 7 Drumheller Mine
- 8 Star Coal Mines Ltd.
- 9 Rosedale Coal & Clay Products Company Ltd.
- 10 Rosedeer Mine
- 11 Western Commercial Mining Company
- 12 Jewel Collieries
- 13 Aetna Coal Mines
- 14 Arcadia Mine
- 15 Maple Leaf Minerals
- 16 Murray Colliers
- 17 Atlas Coal Mine



Drumheller Valley highlights

- 1 HORSETHIEF CANYON:**
Once a hiding place for its namesake outlaws, Horsethief Canyon is still a perfect place to leave the world behind and hike the badlands.
- 2 HORSESHOE CANYON:**
This is the dramatic introduction to the badlands for many visitors. Explore, take pictures—arrive early for a spectacular sunrise.

- 3 COUNT 11 BRIDGES TO WAYNE:**
In just six kilometres, you'll cross 11 one-way bridges over the serpentine Rosebud River on the way to Wayne.

- 4 THE LAST CHANCE SALOON:**
In Wayne at the historic Rosedeer Hotel is the fabled Last Chance Saloon, a favourite stop for thirsty travellers.

- 5 COAL MINE EXPLORATION:**
The Atlas Coal Mine National Historic Site offers a fascinating first-hand look at the area's energetic past.

- 6 HOODOOS:**
Sculpted by nature, these weird flat-topped formations are an outstanding feature of Alberta's badlands topography. You gotta see 'em to believe 'em!

6 see these



Hoodoo Trail

Much of the famous eerie landscape of the badlands can be seen along the popular Hoodoo Trail. Distances are from the Visitor Information Centre:

Rosedale Suspension Bridge & Picnic Area	8.5 km
Last Chance Saloon/Rosedeer Hotel	11 km
The Hoodoos	16 km
East Coulee School Museum	23 km
Atlas Coal Mine National Historic Site	24 km



4 eat and drink



5 tour a mine





DOWNTOWN DRUMHELLER

your new favourite place

ALL THE COMFORTS: Drumheller offers plenty for those who love to shop, dine, and relax in civilized luxury.



1 come here

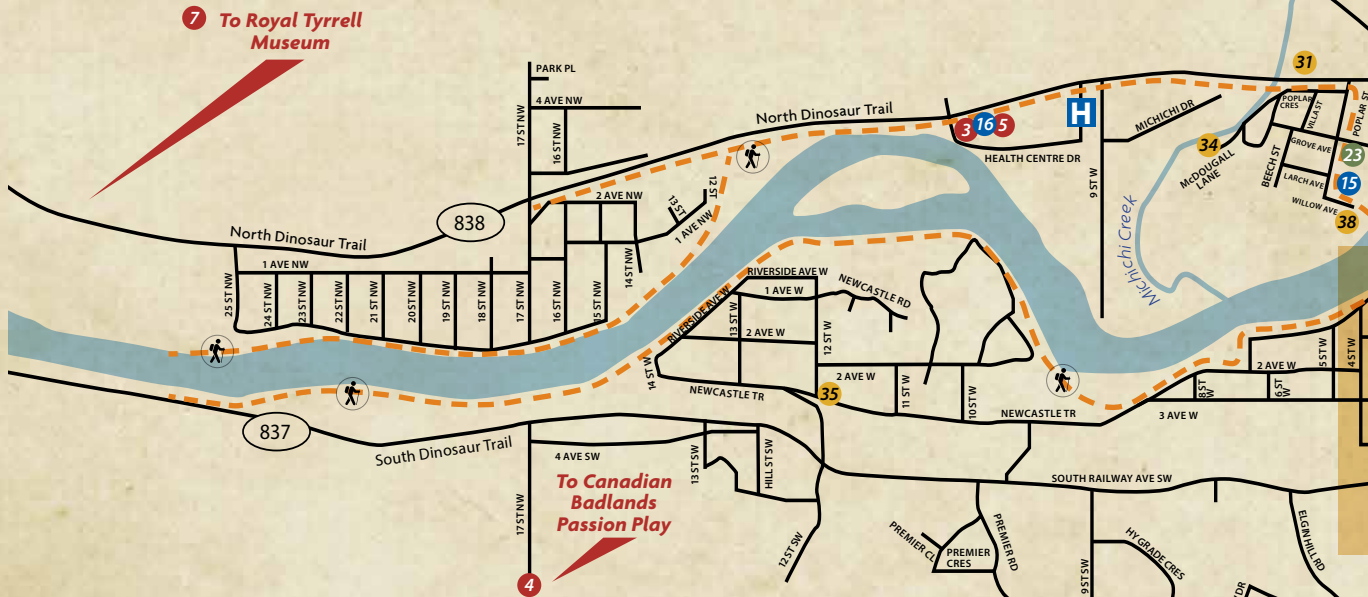


2 go there

3 see this



To Munson, Morrin, Stettler, Delia & Hanna



4 find these





Attractions

- 1 Badlands Gallery – 50C 3 Ave W, Drumheller
- 2 Badlands Historical Centre – 335 1st St E
- 3 Bumper Boat Amusements – 901 North Dinosaur Tr
- 4 Canadian Badlands Passion Play – 605 17th St SW
- 5 The Homestead Museum – 901 North Dinosaur Tr
- 6 Rosebud Theatre – 116 Main St, Rosebud
- 7 Royal Tyrrell Museum – Hwy 838
- 8 World's Largest Dinosaur – 60 1st Ave W

Shopping

- 9 3rd Avenue Arts – 20 3 Ave W
- 10 Ateliero Verda Fine Art Gallery & Studio – 40 3rd Ave W
- 11 Buy Gone General Store Pawn & Consign – 50 North Railway Ave W
- 12 Greentree Mall – 555 Hwy 10 E

- 13 Dry Canyon Collectables – 175 3rd Ave W
- 14 The Faux Den – 175 3rd Ave. W
- 15 The Fossil Shop – 61 Bridge St
- 16 The General Store – 901 North Dinosaur Tr
- 17 Jungling Works – 299 1st St W
- 18 Merle Norman Cosmetics/Marilyn's Fashion & Aesthetic – 337 Centre St
- 19 Riverside Value Drug Mart – 167 Centre St
- 20 R&J Flower Centre – 40 3rd Ave E
- 21 Shredz Snow & Skate – 250 3rd Ave W
- 22 Sunrise Auto Repair – 389 1st St E
- 23 Valley Doll Museum & Gifts – 84 3rd Ave W

Restaurants

- 24 Bernie & the Boys Bistro – 305 4th St W
- 25 Café Ole – 11 Railway Ave
- 26 Ivy's Awesome Kitchen & Bistro – 35 3rd Ave W
- 27 Pizza Hut – Valley Plaza, 249 3rd Ave W
- 28 Vietnamese Noodle House – 202 2nd St W
- 29 Yavis Family Restaurant – Valley Plaza, 249 3rd Ave W

Hotels and Campgrounds

- 30 Canalta Jurassic Hotel – 1103 Hwy 9 S
- 31 Dinosaur RV Park and Dino's RV Nest – Corner of Hwy 9 and North Dinosaur Tr
- 32 Econo Lodge – 392 Centre St & Railway Ave
- 33 Heartwood Inn – 320 North Railway Ave E
- 34 McDougall Lane B&B – 71 McDougall Lane
- 35 Newcastle Country Inn – 1130 Newcastle Tr
- 36 Quality Hotel – 100 S. Railway Ave
- 37 Ramada Inn & Suites – 600, 680 2nd St SE
- 38 River Grove Campground and Cabins – 25 Poplar St N
- 39 Super 8 – 800, 680 2nd St SE
- 40 Travelodge – 101 Grove Pl

walking trails



6 check this out



1 ROYAL TYRRELL MUSEUM:

A visit to this world-famous museum and research facility belongs on everyone's bucket list. People of all ages will be enthralled, amazed, entertained and informed.

2 BADLANDS HISTORICAL CENTRE:

Exhibits here range from dinosaurs to the downright odd and everything in between. Check out the one-wheeled car.

3 HOMESTEAD MUSEUM:

More than 10,000 antiques, artifacts and curios make this an absorbing place to spend a few hours. Don't miss the two-headed calf.

4 DINOSAUR SCULPTURES:

Along with the various dino likenesses gracing private businesses, the Town of Drumheller has placed 33 "official" dinosaur statues throughout the community. Gotta spot 'em all!

5 INSIDE THE WORLD'S LARGEST DINOSAUR:

The trip to the top of this tall, tall T. rex is 106 steps. The view, and the experience, are worth every one. The fibreglass-and-steel giant towers over the Drumheller Visitor Information Centre.

6 DOLLS OF THE VALLEY:

Valley Doll Museum & Gifts features 700-plus dolls in painstakingly crafted historical scenes. Nostalgia rules here, as old-fashioned settings and dolls from bygone eras are showcased along with other reminders of the past, such as furniture and radios.

Drumheller local highlights





FLY OVER AND DISCOVER HORSESHOE CANYON!

MOUNTAIN VIEW HELICOPTERS

The BEST VIEW of the Canadian Badlands! Open mid-June to Labour Day.

CHECK OUT OUR:



HELICOPTER RIDES

Adults \$55 +GST / person, Children \$45 +GST / person (12 and under), 2 - 3 people at a time.



FOSSIL SHOP

An extensive selection of fossils and minerals from all over the world including dinosaur and petrified wood specimens.



BOOK TODAY!

CALL - 403.334.HELI (4354) or
VISIT OUR WEBSITE - www.MVHELI.com



Located on Highway 9, 17 Kilometres Southwest of Drumheller, Alberta



HIKING • PICNIC TABLES • SPECTACULAR VIEWING AREA • BUSES AND TRAILERS WELCOME • SPACIOUS PAVED PARKING AREA

THE ORIGINAL, since 1986

CELEBRATING 30+ YEARS



THE FOSSIL SHOP INC.

— COME TOUCH THE PAST —

COLLECTORS & PREPARATORS OF FOSSILS

Fossils • Minerals • Jewellery •
Giftware • Souvenirs Art for the Home

61 BRIDGE STREET | 403-823-6774

www.thefossilshop.com



■ walk on the wild side



BELOW: There are plenty of opportunities to get up close and personal with the weird, wild natural sights and terrain of the Alberta badlands.



OUT THERE ADVENTURES

MEET THE BADLANDERS WHO KNOW THIS WILD REGION AND ITS ACTION-PACKED RECREATIONAL OPPORTUNITIES

THERE'S NO SHORTAGE OF ADVENTURES and activities available in and around Drumheller. The area's outfitters are ready to help you get off the beaten path to see and experience the region's stunning geography in a variety of exciting ways. So park your car and get ready to canoe, fly, motorcycle, golf, hike or bike the badlands.





fly here ■

UNFORGETTABLE: Seeing Horseshoe Canyon from above is a powerful way to experience its strange, captivating beauty.



1 GET A BIRD'S-EYE VIEW OF THE BADLANDS ON A HELICOPTER TOUR

From the air, Horseshoe Canyon, about 17 kilometres west of Drumheller, looks like another planet. Its serene landscape is a mosaic of mesas and buttes punctuated by odd rock outcrops. See the scope of this surreal landscape from one of Mountain View Helicopters' daily seasonal sightseeing tours.

"It's an amazing way to see the area in a short amount of time," says Ryan Fornataro, manager of the company's Drumheller operations, which take flight from Horseshoe Canyon. "We show guests the whole network of canyons from 1,000 feet [305 metres] in the air. It's stunning."

The tours range from a five-minute canyon overview to a 15-minute ride that takes in the badlands all the way north to Horsethief Canyon.

The choppers fly every day from mid-June to early September. Visit mheli.com and look under Flight Tours.



Ryan Fornataro



2 PADDLE PAST FOSSIL FINDS AND OLD MINES

Launch a canoe or kayak on the Red Deer River and see the badlands from the water. You'll glide past 70-million-year-old rocks and abandoned coal mines

that tell the geological story of Drumheller.

"When you're on the river you see things you can't see from any other direction," says Eric Neuman, owner of Red Deer River Adventures, which offers two-hour, half-day and full-day tours daily from May through October. "You see the ruggedness of the badlands—the hoodoos—but also open areas with trees and bird life."

The river adventures balance scenic paddling with interpretation about the valley's formation and the dinosaur discoveries that put Drumheller on the map. Canoe and kayak rentals are also available for self-guided trips. reddeeriveradventures.com

3 SEE THE BADLANDS BY MOTORCYCLE

The stretch of land from the prairies east of Calgary to the badlands of Drumheller is among Canada's top motorcycle rides.

"The Drumheller valley is a great place to ride—it's an oasis for bikers, with turns and winding roads," says avid local motorcyclist local Mike Todor. Favourite riding routes in the area include the Dinosaur Trail, which circles the valley north of town and features curves, elevation changes, a ferry crossing (May through October) and stunning badlands vistas, especially at Orkney Viewpoint.

Bikers also love the ride to the historic Rosedeer Hotel in Wayne on Highway 10X. The winding route crosses 11 bridges, and bikers are rewarded with cold beer and comfort food at the hotel's iconic Last Chance Saloon.

Stop at the Drumheller Visitor Information Centre for a map. traveldrumheller.com



4 HIKE INTO THE BADLANDS

Brent Noland's mission is to connect people with the land. Owner of Drumheller Rocks Geotourism, he leads guests into the badlands on foot.

Noland, who has a geology background, offers a number of different "rock experiences," as he calls them, from short walks among the hoodoos near East Coulee to longer Rock Walk & Talk tours that include some Geology 101 along the way. >>



Dining and Drinks

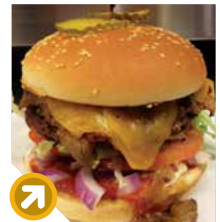
A TASTE OF THE VALLEY



Head to the hamlet of Wayne and its Last Chance Saloon for tasty barbecue, specials and burgers named after Harley-Davidson motorcycles. Soak in the ambience, and enjoy live music every summer weekend. 555 Jewell St., Wayne. visitlastchancesaloon.com



Located in a cozy character house in downtown Drumheller, Sublime Food and Wine offers casual fine dining. Chef Dennis Standage has worked hard to elevate the town's food scene, using produce from local farmers and beef that's exclusively from Alberta. The menu ranges from pulled pork nachos to peppercorn striploin. Reservations are recommended. 109 Centre St., Drumheller. sublimefoodandwine.com



Seeking comfort food? The menu at Bernie & the Boys Bistro, featured on the Food Network's *You Gotta Eat Here!*, includes gourmet burgers, old-school onion rings and milkshake flavours from almond to watermelon. 305 4th St. W., Drumheller. bernieandtheboys.com



The Willow Tea Room at the East Coulee School Museum is the only place to eat in East Coulee. Choose from soup and sandwich specials, tea, coffee and cold drinks in a historic classroom setting. Open from May long weekend to Labour Day. ecsmuseum.com



play golf here

BADLANDS, GREAT GOLF: Dinosaur Trail Golf offers one of the world's most scenic courses.

>> Visitors can also take self-guided hikes into Horseshoe Canyon, a 15-minute drive southwest of downtown Drumheller on Highway 9. The favourite photo stop has undergone a number of upgrades including new viewing platforms, a stairway to the canyon floor and reclamation work. Look for interpretive signs and more trail work to be completed in 2017 to preserve and showcase the canyon's unique natural features.

Drumheller Rocks Geotourism hikes are available year-round. drumhellerrocks.com

For information on other hiking areas around Drumheller, including Horseshoe Canyon, visit traveldrumheller.com/hiking-in-the-badlands.

5 GOLF AT ONE OF CANADA'S MOST UNUSUAL COURSES

The contrast of lush green fairways with a stark badlands backdrop is reason enough to play a round at Dinosaur Trail Golf. But add in the back nine—a mix of elevated tees and gorges that make for some challenging “target-style” golf with spectacular views of hoodoos—and it becomes a bucket-list course worth the loss of multiple balls.

“Bring a camera,” says golf pro and general manager Phil McCluskey. “It truly is unlike any other golf course.”

The more traditional front nine is lovely, too, carved through mature trees and bushes with water hazards and views of the Red Deer River. Afterward, try the southwestern chicken burger at the clubhouse.

The course is open mid-April through Thanksgiving weekend. dinosaurtrailgolf.com



Carol Todor

6 CYCLE AROUND DRUMHELLER

Rent a bright yellow bicycle from 3rd Avenue Arts and pedal the 18 kilometres of mostly-flat trails around town.

“Most people want to cycle along the Red Deer River,” says Carol Todor, who saw a business opportunity in the many visitors who arrive in Drumheller by tour bus and want to see more of the area.

Cyclists can ride to the Royal Tyrrell Museum, or pedal a few more minutes along North Dinosaur Trail to the landmark Little Church. Bike around town to see the sights, including dozens of dinosaur statues on park benches and street corners, and the World's Largest Dinosaur, a giant *T. rex* replica that towers above the Visitor Information Centre.

Bike rentals are available May through October. 3rdavenuearts.com



Theatrical Adventures

A FLAIR FOR THE DRAMATIC

Live theatre and music thrive in the badlands. Here are two of the most popular cultural experiences in the area.



In the town of Rosebud, 35 kilometres southwest of Drumheller, the acclaimed Rosebud Theatre runs shows Wednesday through Saturday most of the year. Sunday matinees are added in the summer. A buffet dinner is included with all Opera House (main stage) tickets. rosebudtheatre.com



Since its first performance in 1994, the Canadian Badlands Passion Play has gained international recognition as one of North America's must-see cultural and tourism events. This biographical tale about Jesus is performed every July on Canada's largest outdoor theatre stage, set in the badlands, with a cast of more than 200. And don't miss the summertime Canadian Badlands Concert Series, featuring blues, classical, folk and iconic Canadian acts for 2017. canadianpassionplay.com



Watch our website for
NEW 2017 Season Tours & Events

The Dinosaur Valley Express offers visitors a new exciting way to explore the Drumheller Valley.

Take a ride on this unique 1920's style trolley. Learn interesting facts and insights about this incredible region with our on board interpretive guide.

Call us to book your special event!
Weddings, parties, family reunions & group tours

Phone: 403-823-8664
www.dinosaurvalleyexpress.com
Email: dinosaurvalleyexpress@gmail.com



Dry Canyon Collectables & THE FAUX DEN



175-3rd Ave West, Drumheller

Dry Canyon Collectables

Come check out the selection of native collectibles, genuine moccasins, trap door underwear, dream catchers and many other unique items. Enjoy the gallery of local artists' work. If you're looking for a one-of-a-kind gift, you'll find it here.

Open daily July & August:
1pm - 9pm

Seasonal hours:
September - June



THE FAUX DEN

Wide selection of old and new gift items unique to the Drumheller Valley. With a down-home, friendly attitude, the Faux Den will take you on a journey through antiques, souvenirs, garden ornaments, toys, t-shirts, fossils, jewelry and lots more.

May- December Hours:
Monday - Wednesday
(11am - 7pm)

Thurs - Sat (11am - 9pm)
Sun (1pm - 5pm)

January - April Hours:
Closed Monday & Tuesday

There's something for everyone!

403-856-3556

403-820-5224



COUNTRY ACRE BITS & BAUBLES ANTIQUES

Relive the past as you peruse horse and farm memorabilia. Many rare, one-of-a-kind items and a great selection of depression glass.

338 Centre Street, Drumheller
1-403-823-4617



1 queen room

2 queen room

Great Value Each Time You Stay:

Each room offers a Microwave, Refrigerator, Cable Television and Air Conditioner!

- * Competitive Rates and Exceptional Service
- * Pet-Friendly Rooms
- * Fax, Copy and Printing Services Available
- * Comfortable Queen Beds, New LCD Televisions
- * Fastest Free wi-fi
- * Complimentary Continental Breakfast

New Management

Located in Downtown within walking distance of Badlands Community Facility and World's Largest Dinosaur.

Econolodgedrumheller.com

Toll Free: 1 (800) 823-0022

Direct: 1 (403) 823-3322

Newly Renovated

GREAT LOCAL ART

3rd Avenue Arts

Quality, Canadian made Arts & Crafts. Over 30 Artists works on Display.

We are open most days over the summer.

We also offer passport photos & Picture Framing. Located just off Center Street on 3rd Avenue.

Call 403-823-3686 for more info.

INTERESTING STUFF



Featuring the works of Jacqueline Sveda and other invited Artists.

#40 - 3rd Ave West
403-710-6754

BADLANDS GALLERY

The Badlands Gallery Features Local Art created by members of the Canadian Badlands Artists Association.

There are a variety of works in many disciplines.

#50C - 3rd Ave West
403-823-8680

Badlandsgallery.com
Look on FaceBook!

VISIT GALLERY ROW



CARACOL CLAY STUDIO AND GALLERY

Janet and John invite you to visit their East Coulee Gallery full of their handmade pottery treasures. Open from 10 am - 4 pm daily. Just follow the signs. Browsers Welcome.

403-822-2258



RIVER GROVE CAMPGROUND AND CABINS

Scenic River Grove offers shaded RV and tent sites. Teepees are \$68, and cabins from \$98-\$168 + GST. (No pets in cabins). Located across the bridge from tourist info centre, World's Largest Dinosaur, waterpark & aquaplex. We have an arcade, playground, C-Store & free Wi-Fi. Quiet time 11 pm to 7 am.

403-823-6655
camprivergrove.com



STARLAND RECREATION AREA

Open May15 – Oct.15, this campground is located beside the Red Deer River north of the Morrin Bridge. It offers large spacious camping areas and a scenic backdrop of the river and hills. Besides fishing, canoeing and great hiking opportunities, there is also a playground and three ball diamonds.

403-772-3793
starlandcounty.com



EAST COULEE SCHOOL MUSEUM

Experience life in a coal mining community: a school converted into a museum of the coal mining era. Learn how families lived or book an interactive program with the strict school marm! Cafe - homemade food. 15 minutes east of Drumheller, Open May to Sept 30, 7 days 10am to 5pm

403.822.3970
ecsmuseum.ca



KNEEHILL COUNTY CAMPGROUNDS

Camp in Kneehill County! Keiver's Lake, west of Three Hills, offers over 40 campsites, 8 group sites, day use areas, and various recreational amenities. Braconnier Dam, located off Highway 21, has 10 campsites available. Swalwell Dam, off Highway 575, boasts a fully stocked dam, 10 camping stalls and day use areas.

403-443-5541
kneehillcounty.com



MICHICHI RECREATION AREA

Open May15 – Oct.15, this campsite is located 0.5 km south of Michichi along SH 849. The campsite offers a beautiful setting with great fishing opportunities, a playground, coin-operated showers and a camp kitchen.

403-772-3793
starlandcounty.com





DRUMHELLER SUPER 8

Indoor pool, waterslide, hot tub, free breakfast, guest laundry, exercise room, elevator, king and kitchen suites available, ground floor rooms with exterior access. Close to Ramada, O'Shea's Eatery & Ale House, Boston Pizza and A&W. Pets with permission.

403-823-8887 | Toll Free: 1-888-823-8882
 super8.com
 E:gm@super8drumheller.com



DRUMHELLER RAMADA INN & SUITES

Indoor pool, waterslide, hot tub, free breakfast, fitness centre, guest laundry, business centre, meeting room, high-speed Internet. Pets with permission. King suites, ground-floor rooms with exterior access, elevators. Close to Super 8, Boston Pizza, A&W, O'Shea's Eatery and Ale House.

403-823-2028 | Toll Free: 1-877-807-2800
 canaltahotels.com
 E:gm@ramadadrumheller.com



NEWCASTLE COUNTRY INN

Adult and senior accommodations. Clean, comfortable and quiet. Charming staff. Recipient of many housekeeping awards. Free Wi-Fi, self-serve breakfast, gluten-free available upon request. Air-conditioned. No Pets.

403-823-8356 | Toll Free: 1-888-262-4665
 newcastlecountrypinn.net



CANALTA HOTELS - HANNA

The newly renovated Canalta Hotel in Hanna offers friendly service and quality amenities. This location offers guests a fitness center, hot tub, guest laundry, free high speed Wi-Fi and complimentary deluxe continental breakfast to start your day. Room types include kitchenette and business suites.

403-854-2400
 canaltahotels.com



CANALTA JURASSIC HOTEL

Free deluxe continental breakfast, guest laundry, high speed internet, elevator, hot tub and steam room. Kitchen Suites and ground floor rooms with exterior access. Hotel is attached to the Cretaceous Conference Center, the ultimate venue for your next event or corporate meeting. Close to Tim Horton's, Extra Foods, convenience store, Dairy Queen and liquor store.

403-823-7700
 Toll Free: 1-888-823-3466(DINO)
 canaltahotels.com



MCLAREN DAM

Open May 15 – Oct.15. From the junction of Hwy 9 and Range Rd17-5, travel 24 km north on SH 851, then 3.2 km west, 0.8 km south and east into the site. This serene location offers great fishing opportunities in a quiet country setting.

403-772-3793
 starlandcounty.com



BADLANDS HISTORICAL CENTRE



Welcome to the badlands historical centre, a unique museum and gift shop located in the heart of downtown Drumheller.

All visitors are welcome to stop in and take a step back to the past.

We are a small, volunteer-run community organization dedicated to the preservation and presentation of local heritage and the unseen uniqueness of the Badlands.

So much more than dinosaurs, this museum touches on all the great aspects of our heritage that created and developed Drumheller.


From coal mining to pioneer settlement, from fossil hunters to the creative minds of local residents, we have it all.

Open: May-October
335- 1st Street East, Drumheller
Phone: 403-823-2593

— THE — GENERAL STORE



Specialty Coffees & Teas
Wholesome & Hardy Lunches
Gifts, Jewelry, Home Décor
and so much more.

901 North Dinosaur Trail, 
Drumheller, AB (587) 795-0736
www.generalstoredrumheller.com

Geology Tours



*Digging Deep
into the
Earth History of
Dinosaur Valley*

*Ideal Family Learning
Adventure, Flexible Tours,
Socially Conscious*

Brent Noland, B.Sc. Geology

www.drumhellerrocks.com

403 334 2104 

**HOME OF
FARGO
YEAR THREE**

Beiseker

**HOME OF SQUIRT
THE WORLD'S LARGEST SKUNK!**

www.beiseker.com
Junction Hwy #9 & Hwy #72 – (403) 947-3774

Museum · Camping · Tourist Booth · Shops · Sod Hut · Cafes · Caboose

FROM THE WILD WEST TO THE FINAL FRONTIER

CANADA'S MOST UNIQUE MUSEUM

DISPLAYING REAL COSTUMES, PROPS & SET PIECES FROM MOVIES & TELEVISION

NOW LOCATED IN DRUMHELLER, ALBERTA!

- ◆ Hell On Wheels ◆ Magnificent Seven ◆ Thunderbirds ◆ Harry Potter ◆ Superman
- ◆ Titanic ◆ Carol Burnett ◆ Terra Nova ◆ Captain America ◆ Pirates of the Caribbean
- ◆ Star Trek universe...and more

Also displaying
real life historical
artifacts from:

- ◆ R.M.S. Titanic
- ◆ R.M.S. Olympic
- ◆ U.S. 7th Cavalry



**TREKCETERA
MUSEUM**
DRUMHELLER, AB, CANADA

TM & © 2017 CBS Studios Inc. All Rights Reserved.



NEW FOR 2017!
We're offering
Photo Ops of
YOU standing in
the Borg Alocove
or sitting on the
Shinzon Throne!

802 Hwy 9 South Dr. ◆ Ph: (403) 820-4085 ◆ www.trekcetera.com

**Kneehill
County**

Come visit us!

Hike Horseshoe Canyon Off Highway 9	Camp at Braconier Dam Off Highway 21
Camp at Keiver's Lake West of Three Hills	Camp at Swalwell Dam Off Highway 575

Events Calendar
online
kneehillcounty.com
Follow us on
Facebook and Twitter
[@kneehillcounty](https://twitter.com/kneehillcounty)



visit here

SPACING OUT: Trekcetera Museum co-owners Devan Daniels, left, and Michael Manigold moved their treasure trove of sci-fi memorabilia to Drumheller for a 2017 opening.



STRANGE STUFF

DRUMHELLER'S UNUSUAL LANDSCAPE INSPIRES
FLIGHTS OF FANCY AND THE EMBRACE OF ODDITIES



did I just see that?

ALIEN ATTRACTION: Maybe extraterrestrial beings think the badlands look like home. UFO sightings seem to be a regular occurrence in the area.



Maybe the weird landscape just puts people in an extraterrestrial frame of mind. There have been frequent UFO sightings in the Drumheller valley. Reports of a flying saucer near the town were recorded in the 1940s and again in 1973. In 1979, when local resident Jay Russell was 11 years old, he swears he saw a large, bright red-and-blue oval craft that hovered before shooting off to the west.

"Absolutely, Star Trek could have been filmed in Drumheller"

—Devan Daniels

from *The Martian* or the original *Star Trek* television series, perhaps such sightings shouldn't be all that surprising. It's probably why the TV show *The X-Files* shot an episode in the area in the 1990s.

In fact, Drumheller's connection to movies and television is one of the reasons the Trekcetera Museum—famously known as "the *Star Trek* museum"—is moving to the city in early 2017 (it's scheduled to be open by March) from the town of Vulcan.

"Absolutely, *Star Trek* could have been filmed in Drumheller," says Trekcetera Museum co-owner Devan Daniels. "We are truly

a movie and television historical museum—that's the big tie-in."

Drumheller is also one of the province's top tourist destinations, an important consideration since Daniels and co-owner Michael Manigold were looking for a city with year-round tourism so they could grow Trekcetera's collections.

They've just procured a 32-piece collection of costumes and props from *Hell on Wheels*, a western TV series filmed near Calgary, including one episode shot in the badlands. Visitors will also see an original cape from *Superman III* (coincidentally, the cemetery scene from *Superman I* was filmed near Drumheller), as well as the museum's original claim to fame: *Star Trek* memorabilia.

Tourists on the lookout for other flights of fancy will want to climb the 106 steps to the top of the World's Largest Dinosaur, a fibreglass-and-steel *T. rex* replica that towers 25 metres above the Visitor Information Centre downtown. They can also try to spot the 30-plus dinosaur statues that are scattered around town to play up its reputation as the planet's dinosaur capital.

And if that's not weird enough, folks should head to the Homestead Antique Museum to see a real two-headed calf. The creature was born that way but reportedly only lived a few hours. Now, it's a taxidermy display—and further proof that Drumheller embraces all kinds of oddities. ☰



find these

DINO DELIGHTS: Drumheller is populated by dozens of dinosaur statues. How many can you find?



see this

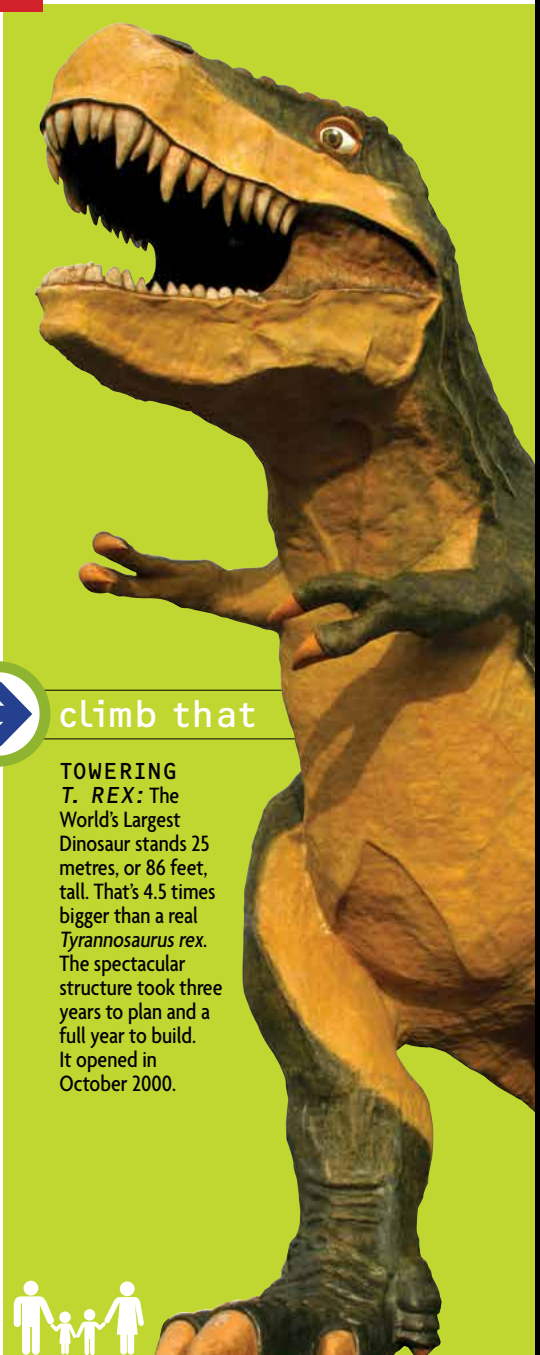
TWO UNUSUAL: The two-headed calf taxidermy display at the Homestead Antique Museum.



climb that

TOWERING T. REX: The World's Largest Dinosaur stands 25 metres, or 86 feet, tall. That's 4.5 times bigger than a real *Tyrannosaurus rex*. The spectacular structure took three years to plan and a full year to build. It opened in October 2000.

86 FEET



Best Views In Drumheller!

BOOK NOW at choicehotels.ca
for your *Guaranteed Best Rate!*



BY CHOICE HOTELS

www.ChoiceHotels.ca

We provide our guests with a truly memorable stay in a customer-focused hotel.

Centrally located, we offer a free hot breakfast, Wi-Fi, in-room fridge and microwave, guest laundry, exceptional fitness area, and the opportunity to visit with friends in one of our many common areas.

100 6th Ave SE, Drumheller AB • 403.856.4444 • 1-800-4CHOICE



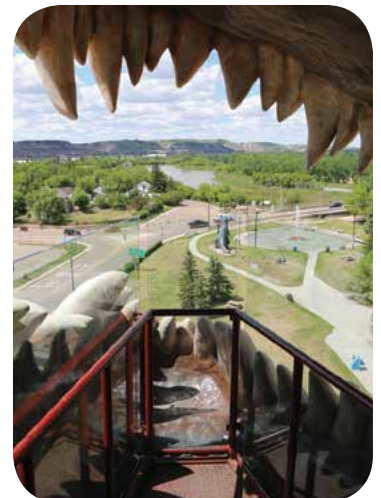
TOWERING HIGH OVER DRUMHELLER

**WORLD'S LARGEST
DINOSAUR**



... the World's Largest Dinosaur, with a newly-painted exterior, is designed for dino-enthusiasts of all ages to explore, inside and out. Climb 106 stairs inside the giant T-rex lined with beautiful murals to admire the breathtaking badlands from her gaping jaw!

A MUST-SEE ATTRACTION!

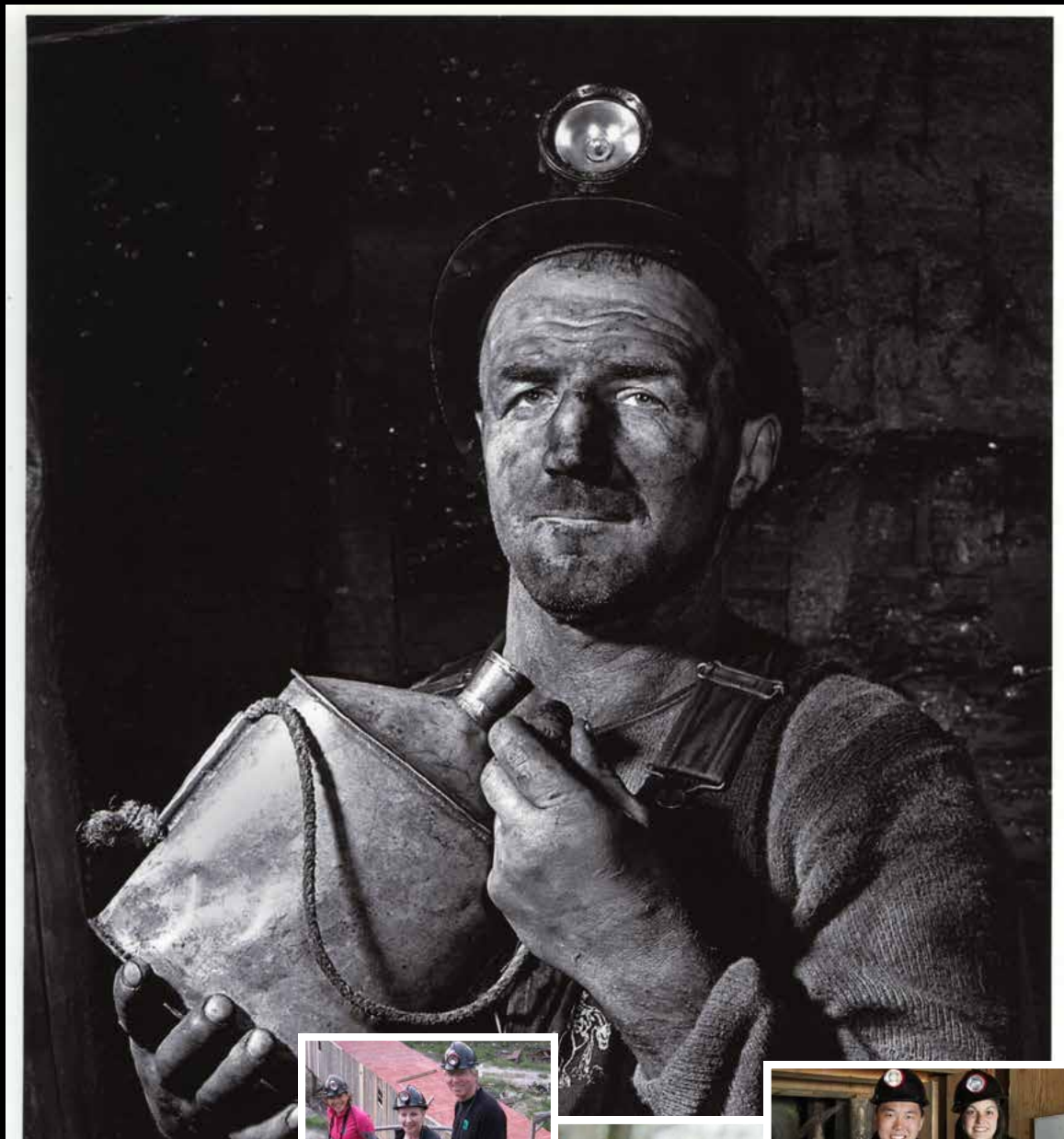


WORLDSLARGESTDINOSAUR.COM

1-866-823-8100 | OPEN YEAR-ROUND!

60-1st Avenue W. Drumheller, AB  

Go UP the underground, CLIMB the tippie, RIDE the train...
MINE-BLOWING HISTORY!



OPEN DAILY MAY-OCT (THANKSGIVING WEEKEND)
403 822 2220
atlascoalmine.ab.ca
15 minutes east of Drumheller on Highway 10